

THE DENTAL
SOLUTIONS
COMPANY™



Intego Pro

Performance you can rely on

dentsplysirona.com





Your reliable partner

Intego Pro is the best treatment center of its class. It is based on the innovative power and award-winning design of our existing treatment centers. As a reliable partner for an efficient practice, Intego Pro has all the features that provide optimal support: ergonomic design for better workflows, high quality standards in processing and design, and a great value – this is why Intego Pro is our performance class.

Great value

Excellent performance and innovative functions at a great price, customized options for great value.

Ergonomic design

Designed for intuitive handling and optimized, integrated workflows.

Quality made in Germany

Defined quality assurance processes, durable materials, and sturdy, future-proof design.

Intego Pro TS (OTP arm design)

- Ergonomic positioning of the dentist element due to a wide range support arm system
- Functional tray system with detachable tray that can be positioned flexibly
- Integrated, comprehensive infection prevention concept for optimal results



Great value you can rely on

Your work day is complex and places many different demands on the treatment center you choose. Intego Pro gives you the perfect solution: Choose from two treatment concepts that you can configure flexibly. Whether you select a whip arm or a hanging hoses design – every option offers optimal performance at a fair price.

Your benefits at a glance

- Integrated, comprehensive infection prevention concept for optimal results.
- EasyTouch touchscreen and integrated foot control concept for easy, intuitive operation.
- Flexible assistant element suitable for two- or four-handed treatment.
- Numerous equipment options with a great value.
- Available as the TS model with hanging hoses or CS with whip arms.

CS - The whip arm design



The **whip arm design** is ideal for the widest range of treatment situations with four-handed or two-handed dentistry. The dentist element can be rotated by up to 240° for optimal positioning. The maximum distance between the dentist element and instruments is 90 cm.

The elegant world

Classic, timeless combinations for an exceptional high-end look.



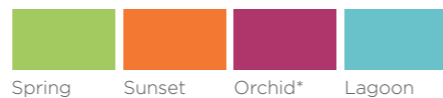
The natural world

Soft, warm shades for a soothing treatment atmosphere.



The vital world

Vivid colors and bright tones for a modern, lively atmosphere.



* Available colors for Lounge upholstery.

Ergonomic design you can rely on

The treatment center is the heart of your practice. Intego Pro perfectly combines appearance and functionality – so you can work comfortably under optimal conditions. In addition to their harmonious design, coordinated components and variety of color combinations, Intego Pro treatment centers meet the strict criteria of our ergonomics concept. Intego Pro fits the style of your practice – and your taste.

The upholstery options



Premium upholstery

The high-quality, seamless upholstery ensures comfort even during long treatments.

Lounge upholstery

Soft, pleasant surface material and comfortable padding for utmost relaxation. Contoured surface for perfect positioning.

Award-winning design

Dentsply Sirona has earned prestigious design prizes for many of its products, including the red dot design award, the iF Product Design Award Gold, the iF communication design award, and the Good Design Award.



Perfect results

Every treatment is a complex procedure. Our ergonomic products provide optimal access to the patient and smooth treatment workflows with a high level of patient comfort. Intego Pro combines every dimension of ergonomics to make treatment easier for you. Achieve perfect results even at the end of a long working day - with your expertise and the support of our treatment center.



1 Intuitive sitting

- **More freedom of movement**
Thin backrest for ideal freedom of leg movement, flexible positioning of the foot control
- **Optimized instrument placement**
Perfect coordination of dentist and assistant elements, flexible positioning of the additional tray in the whip arm and hanging hose models
- **Comfortable working stools**
Hugo, Carl, Paul

2 Comfortable positioning

- **Easy adjustment of the treatment center**
Flexible height adjustment, swiveling cuspidor
- **Greater patient comfort**
Gentle chair lift drive, armrests, Vario footrest, comfortable upholstery, ErgoMotion

3 Optimum visibility

- **Perfect illumination of the treatment area**
LEDview Plus or LEDlight operating light, LED instrument light
- **Flexible headrests**
Flat or double articulating headrest
- **Perfect intraoral images**
SiroCam F, AF or AF+, 22" HD monitor on the treatment center

4 Integrated workflow

- **Intuitive operation**
EasyPad user interface or EasyTouch touchscreen
- **Integrated tabletop device functions**
Integrated torque control for endodontics, ApexLocator on the EasyTouch
- **Modern equipment**
Innovative instruments, modern patient communication system Sivision, USB, SD card and Ethernet interface

Perfect results

- Clinically perfect
- Esthetically perfect
- Perfect for the success of your practice

Intuitive operation

Difficult treatments require your full concentration. This is why Intego Pro is intuitive - with two state-of-the-art, intuitive user interfaces and innovative instruments for stress-free treatment. So you can concentrate on what's really important - your patient and a perfect treatment result.

State-of-the-art, intuitive interfaces



EasyPad

Clear and intuitive user interface - standard in Intego Pro.



EasyTouch

This user interface can be optionally integrated. More operating comfort thanks to intuitive touchscreen technology and additional operating and display options.

Integration possibilities for endodontic treatments



ApexLocator

An ApexLocator can also be integrated into the EasyTouch to allow for permanent control of the working depth during endodontic treatment and a reduction of X-ray exposure.



Integrated Torque Control

Speed and torque are adjustable, and the motor stops automatically when the set maximum torque is reached. This ensures greater safety and perfect workflow for endodontic treatment.

- 1 Sprayvit E**
Optimal visibility due to integrated LED light.
- 2 BL ISO E motor**
Sterilizable brushless motor with speed and torque control during treatment. Especially lightweight, compact and with a wide speed range.
- 3 SiroSonic L scaler**
Handpiece and tips can be sterilized. Controlled, straight oscillation with electronic power and water control.
- 4 SiroCam F or AF or AF+**
Detailed intraoral images with the easy to operate SiroCam F or AF/AF+ with autofocus.



Impressive patient comfort

Your patients will also appreciate this comfort: The Intego Pro patient chair has an ergonomic design and, together with the headrest, ensures that your patients are especially comfortable. The chair lowers far enough so that even shorter patients can get in and out easily. And there is no doubt – patients who are comfortable feel more secure and remain loyal to your practice.



NEW: Dentsply Sirona's unique ErgoMotion for the Intego family

Your benefits

- Better positioning for maxillar or mandibular treatment
- Less overstretching of patient's head
- No overstretching and compressing of patient's spine
- No readjustment of headrest necessary

Double articulating headrest

Quickly adjustable to various treatment situations as well as patients with varying statures.

Premium/Lounge upholstery

The high-quality upholstery ensures comfort even during long treatments.

NEW: ErgoMotion

The tilting of the backrest matches the movement of the patient's spine to prevent stretching and compression effects.

Armrests

Your patients can rest their arms comfortably.

Lifting system

The unique chair lift drive gently moves patients into the proper position.

Vario footrest

The Vario footrest that comes with the Premium upholstery can be easily extended to provide even very tall patients with ergonomic positioning.

Safety you can rely on

Dentists all over the world share the highest demands for the safety of their patients and practice team. The Intego Pro infection prevention concept is designed so you can comply quickly and easily with all infection control regulations. The assistant element and water unit designs make infection prevention procedures even easier and less time consuming. All of this guarantees perfect infection control.

Cuspidor
Removable and swiveling,
made of high-quality glass.

**Purge and
Autopurge function**
The instrument hoses can
be flushed for a short time
or cleaned intensively via
the cleaning adapters.

Suction systems
Compatible with all conventional
central wet or dry suction systems,
including amalgam separator.

Intego Pro

The Comfort water unit and assistant element are based on a comprehensive infection prevention concept.



Integrated disinfection system
Permanent disinfection of all water
lines with Dentosept P. Automatic
sanitizing function for regular intensive
disinfection. Can also be used
as a self-contained water supply.



Integrated cleaning adapters
For automatic purging of instrument
hoses (Autopurge) and sanitization
of the water lines.



Chemical suction hose cleaning
Cleaning agent container for
chemical flushing of the suction lines.
The concentration of cleaning agents
can be individually adjusted.

Flexible into the future

In a good practice, customized settings add to your comfort. This is why you can configure the Intego Pro exactly the way you need for optimal support of your treatment workflow. But flexibility means even more to us – and you can prepare Intego Pro with technical options and interfaces so you are ready for future applications.

Many models

Choice of two headrests

The flat headrest can be adjusted quickly and flexibly. Optionally, you can select a double articulating headrest that is easier to position and allows you optimal visibility even in difficult-to-see areas.



Flat headrest



Double articulating headrest

Two operating light options – always optimal illumination

Two choices of LED lights for optimal illumination of the operating field. Our premium operating light LEDview Plus offers with its polychrome LEDs and sophisticated technical features natural light in perfection.



LEDlight



LEDview Plus

Assistant element: Comfort or Compact

Both assistant elements are very space-saving and ensure maximum freedom of movement. With the Comfort model, you can work comfortably even without an assistant.



Comfort assistant element



Compact assistant element

Ultramodern equipment

The SiroCam F/AF/AF+ autofocus cameras combine superior image quality with easy operation.



	SiroCam F	SiroCam AF	SiroCam AF+
Focus	Fixed Focus	Auto Focus	Auto Focus
Image format 16:10	✓	✓	✓
Pixels (usable)	0.42 megapixel	0.65 megapixel	1.00 megapixel
Workspace	✓ 5–20 mm	✓ 2–130 mm	✓ 2–130 mm
Resolution live-image	824 x 514	824 x 514	824 x 514
Resolution still-image	824 x 514	1024 x 640	1276 x 796

Future-proof design

Interfaces: flexible into the future

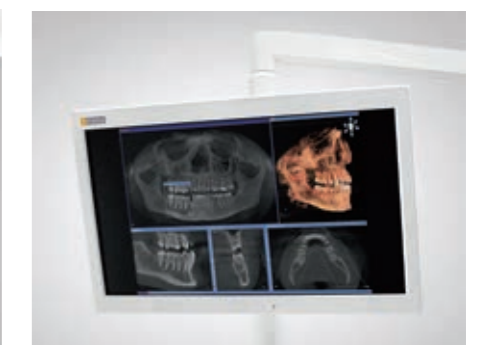
A network interface in the patient chair and a USB port in the dentist or assistant element allow you to integrate new functions and network your practice – troubleshooting by your service technician is also much easier.



Integrated USB interface

Sivision 22" AC monitor

With this HD monitor, you can explain intra-oral camera and X-ray images, software and planning views, videos and PowerPoint presentations to your patient directly at the treatment center.



Sivision 22" AC monitor

Quality you can rely on

We don't want to just satisfy our customers, we want to impress them. This is why quality, performance, and service are key for us. Dentsply Sirona treatment units combine high quality with real innovations that perceptibly enhance treatment comfort and workflow.

Reliability and durability



Precise, elaborate quality tests and robust materials make Intego Pro a reliable treatment center with an above-average service life.

High quality



Intego Pro immediately shows our attention to detail. The materials used – robust, shapeable plastics, solid steel and aluminum components on the inside, high-quality glass and upholstery – meet the high quality demands of a premium product.

High standards



Dentsply Sirona is a technology leader with more than 130 years of innovation history. Our engineers and scientists in Research & Development not only pay close attention to innovation, but also quality.



Future-proof design









At the Dentsply Sirona innovation center, future trends are anticipated and products are prepared to be equipped for the technology demands of the future.



Individual configuration

You can configure your Intego Pro treatment center to fit your needs and meet your own desired great value.

Intego Pro

Basic unit	Version	User packages	Option packages
<p>Patient chair</p> <ul style="list-style-type: none"> • Premium upholstery • Pneumatic instrument foot control • Flat headrest • 4-way foot switch <p>Dentist element</p> <ul style="list-style-type: none"> • 5 instrument positions • EasyPad user interface • Supply for 2 drill drives • Instrument light source • Supply electronics for up to 2 motors and scaler <p>Assistant element</p> <ul style="list-style-type: none"> • Comfort version, on a support arm with wide swivel range • 4 handpiece positions • Saliva ejector and HVE • Light source for Sprayvit E <p>Water unit</p> <ul style="list-style-type: none"> • Comfort design • Ready for the integration of an automatic disinfection device • Integrated cleaning adapters • Cuspidor with manual swivel function • Wet suction with multi-station valve • Integrated water flush suction hose cleaning • Water heater 	<p>TS version with hanging hoses</p>  <ul style="list-style-type: none"> • The height of the dentist element can be adjusted and held in place with a pneumatic brake • Ergonomic design with flexibly positionable dentist element and movable tray holder • Ample instrument area on the dentist element and tray holder <p>CS version with whip arms</p>  <ul style="list-style-type: none"> • Ideal for the widest range of treatment situations, regardless of two-handed or four-handed treatment • Optimum reach of instrument hoses: up to 90 cm • The height of the dentist element can be adjusted and held in place with a pneumatic brake 	<p>Start Pro</p>  <ul style="list-style-type: none"> • C+ electronic foot control • Sprayvit E in the dentist element • 1 turbine hose • 1 BL ISO E micro-motor • LEDlight* <p>Innovation Pro</p>  <ul style="list-style-type: none"> • C+ electronic foot control • Sprayvit E in the dentist element • Third drill drive • 1 turbine hose • 2 BL ISO E micro-motors • Sirosonic L scaler • EasyTouch user interface • Sprayvit E in the assistant element • LEDview Plus <p>Advance Pro</p>  <ul style="list-style-type: none"> • C+ electronic foot control • Sprayvit E in the dentist element • 1 turbine hose • 1 BL ISO E micro-motor • Sirosonic L scaler • EasyTouch user interface • LEDview Plus <p>Endo Pro**</p>  <ul style="list-style-type: none"> • Integrated torque control • ApexLocator • Endo 6:1 contra-angle handpiece • e-Control <p><small>* LEDview Plus at additional charge ** Only with user interface EasyTouch</small></p>	<p>Sivision Ready</p>  <ul style="list-style-type: none"> • USB interface for the dentist or assistant element • Network interface <p>Sivision Start</p>  <p>with/without monitor</p> <ul style="list-style-type: none"> • USB interface for the dentist or assistant element • Network interface • SiroCam F (SiroCam AF or AF+ at additional charge) • Monitor mount on the light support column • Optional: 22" AC monitor

Your individual options

Here you can view the complete list of individual options, and a checklist of what is included with basic units.

Patient chair	
2 treatment positions, S and O position	■
Integrated junction box	■
Chair lift system 185 kg	■
Flat headrest	■
Double articulating headrest	□
Premium upholstery	■
Lounge upholstery	□
ErgoMotion	□
4-way foot switch	■
Booster cushion for small patients	□
Right armrest	□
Left armrest	□
Valve set for external devices	□
Vacuum pressure reduction kit	□
Cover installation kit	□
Separate junction box	□
Adapter plate	□

Dentist element	
Height-adjustable support arm with pneumatic brake	■
5 instrument positions	■
Additional camera holder for TS dentist element	□
Hydro-pneumatic supply for 2 drill drives w/o fiber optics	■
Pneumatic instrument foot control	■
C+ electronic foot control	□ S, A, I
EasyPad user interface with 2 user-specific settings	■
EasyTouch user interface with 4 user-specific settings	□ A, I
Sprayvit E with light	□ S, A, I
Sprayvit E with light (water button on the left)	□ S, A, I
Turbine hose with light	□ S, A, I
1 st BL ISO E motor with hose	□ S, A, I
2 nd BL ISO E motor with hose	□ I
SiroSonic L scaler	□ A, I
Third drill drive	□ I
Satelec Mini LED curing light	□
Intra-oral light source kit for turbine and Sprayvit E	■
Torque control for endodontic treatments	□ E
eControl: Speed range of 100 - 40,000 rpm	□ E
Integrated ApexLocator	□ E
Endo 6:1 contra-angle handpiece	□ E
Intra-oral X-ray viewer	□
Purge and Autopurge	■
Silicone pad for TS dentist element	□
Additional CS tray holder for 1 standard size tray	□
Additional TS/CS tray holder for 2 standard size trays	□
Silicone pad for CS dentist element	□
Removable silicone sleeves for handles	□

Assistant element	
Compact assistant element, swivel mounted directly on the cuspidor arm	■
Comfort assistant element, ideal for two-handed dentistry	□
4 instrument positions	■
Saliva ejector and HVE	■
Sprayvit E with light	□ I
Sprayvit E with light (water button on the left)	□ I
2nd HVE kit	□
Satelec Mini LED curing light	□
Touch pad	□
Light source for Sprayvit E	■
Silicone pad for Comfort assistant element	□

Water unit	
Prepared for integrated disinfection device	■
Cuspidor with manual swivel function	■
White cuspidor	■
Glas cuspidor	□
Water unit without cuspidor	□
Multi-station valve for standard wet suction	■
Cuspidor valve for standard wet suction	□
Automatic separator	□
Amalgam separator	□
Integrated disinfection system with permanent waterline disinfection and automatic sanitization function	□
Water heater	■
Water flush suction hose cleaning system	■
Chemical suction hose cleaning system	□

Operating light/Heliident Plus options	
LEDlight	□
LEDview Plus	□
LEDview Plus ceiling light	□
Adaptation for LEDview Plus/Heliident Plus ceiling combination	□
Adaptation for Heliident Plus unit model	□

Patient communication	
USB interface in the dentist or assistant element	□ SIR, SIS
SiroCam F	□ SIS
SiroCam AF	□
SiroCam AF+	□
Monitor mount on the light support column	□ SIS
22" AC monitor (with integrated power supply unit)*	□ SIS*
Network interface	□ SIR, SIS

- Included in basic unit
- Option
- Not possible/applicable
- SIR Sivation Ready package
- SIS Sivation Start package
- SIS* Sivation Start package with monitor
- S Start Pro package
- A Advance Pro package
- I Innovation Pro package
- E Endo Pro package

Availability of options and features can vary by country.



Hugo working stool



Carl working stool



Paul working stool (pictured with additional foot ring)



Additional swiveling tray holder for CS dentist element



Additional swiveling tray holder for TS dentist element



Double articulating headrest



Satelec Mini LED curing light



X-ray viewer



Additional holder for camera (for TS dentist element)



Comfort assistant element with user interface



C+ electronic foot control



Flat headrest



Valve set for external devices



Adaptation for Heliident Plus unit model



22" AC monitor



Intego Pro without cuspidor



LEDlight



LEDview Plus



SiroCam AF



SiroCam AF+

Dentsply Sirona

Sirona Dental Systems GmbH
Fabrikstraße 31, 64625 Bensheim, Deutschland
dentsplysirona.com

Procedural Solutions

Preventive
Restorative
Orthodontics
Endodontics
Implants
Prosthetics

Enabling Technologies

CAD/CAM
Imaging
Treatment Centers
Instruments